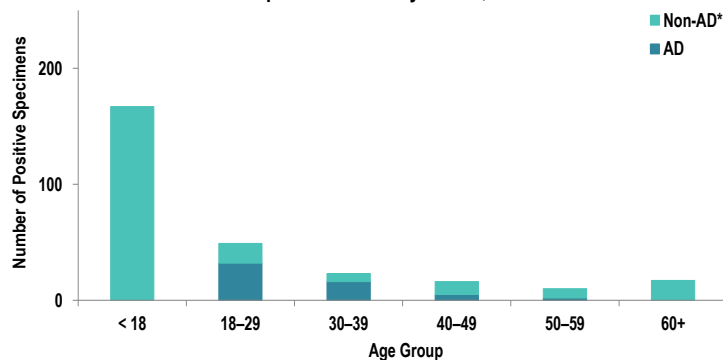


SUMMARY

Influenza activity in the Army population continues to decrease. Overall, respiratory syncytial virus (RSV) activity is low. No influenza-associated hospitalizations were reported during week 15. The season total thus far is 167 hospitalizations compared to an average of 193 hospitalizations in the same time period during the 2018-2023 seasons. Nationwide, influenza activity continues to decrease, with 4.8% of specimens tested by clinical laboratories being positive for influenza A or B, according to the Centers for Disease Control and Prevention (CDC).

DEMOGRAPHICS

Positive Respiratory Specimen Results from Army MTFs by Age Group and Beneficiary Status, Week 15



AD: Fifty-five positive respiratory specimens were collected from active duty (AD) service members (SMs) during Week 15; 58.2% (n=32) of the positive specimens were collected from SMs 18 – 29 years of age.

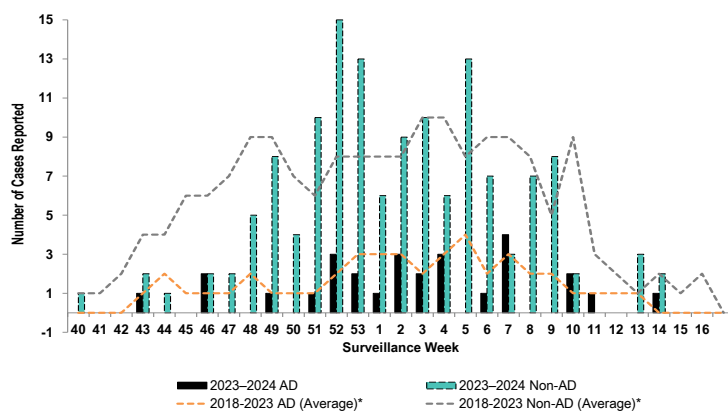
Non-AD: Two hundred and twenty-seven positive respiratory specimens were collected from non-AD individuals during Week 15; 73.6% (n=167) of the positive specimens were collected from individuals under 18 years of age and 7.5% (n=17) from individuals who are 18 – 29 years old.

*Non-AD=All individuals that are not active duty service members.

The age and beneficiary status of some cases were not available. Therefore, all calculations involving these variables were conducted using only available data. Differences in total results, and age- and beneficiary status-specific results may be noted throughout the report.

INFLUENZA-ASSOCIATED HOSPITALIZATIONS

Army Influenza-Associated Hospitalizations Reported in DRSi by Onset Week



No influenza-associated hospitalizations with an onset date in Week 15 were reported to the Disease Reporting System internet (DRSi). The season total thus far is 167 hospitalizations. Similarly, the Week 15 average during the 2018 – 2023 seasons was less than one hospitalization (with an average of 193 hospitalizations reported from the start of the season through Week 15).

The DRSi does not capture cases older than 65 years old for influenza-associated hospitalizations.

*Data from the 2020-2021 and 2021-2022 influenza seasons are not included in comparison calculations due to the unusually low incidence of influenza.

Data are preliminary and subject to change.

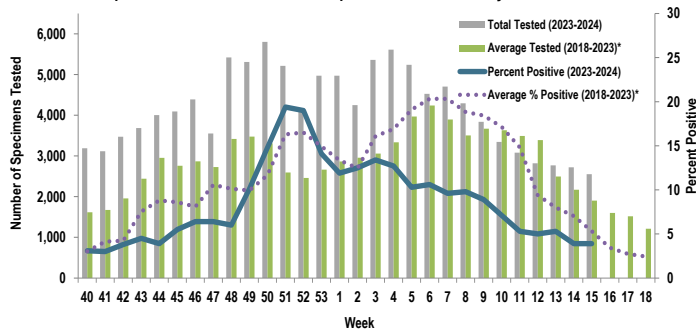
Disclaimer: The mention of any non-federal entity and/or its products is for informational purposes only, and not to be construed or interpreted, in any manner, as federal endorsement of that non-federal entity or its products.

Questions?
Email DCPH-A_DEP

INFLUENZA A ACTIVITY - ARMY

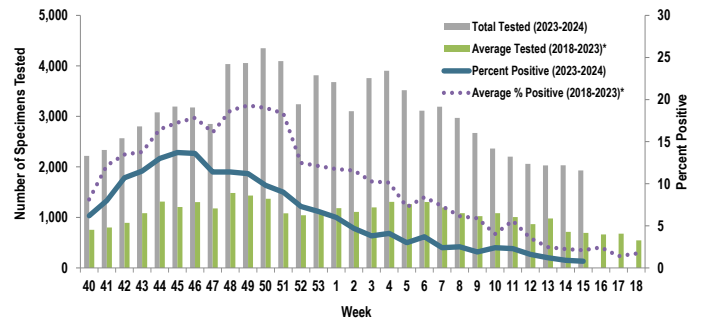
RSV ACTIVITY - ARMY

Proportion of Positive Influenza A Specimens for U.S. Army, 2023-2024



Of the 2,553 specimens tested for influenza A during Week 15, 3.9% (n=100) were positive. Influenza A activity is continuing to decrease.

Proportion of Positive RSV Specimens for U.S. Army, 2023-2024



Of the 1,931 specimens tested for RSV during Week 15, 0.8% (n=19) were positive. RSV activity is low and continues to decrease.

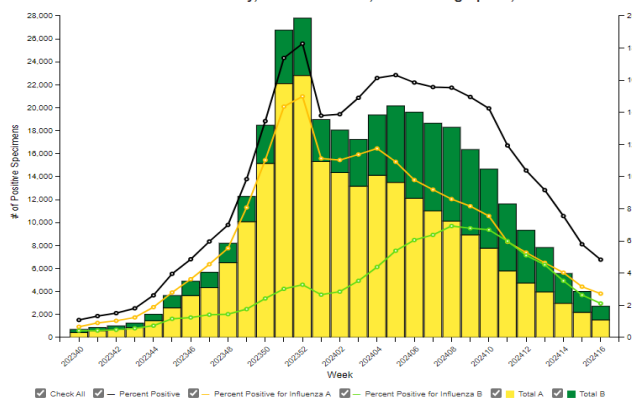
*Data from the 2020-2021 and 2021-2022 influenza seasons are not included in comparison calculations due to the unusually low incidence of influenza.

		Week 12	Week 13	Week 14	Week 15	Season Total
Army MTF Laboratory Results, 2023-24	Adenovirus	9	13	15	21	387
	Enterovirus	44	51	59	49	1,319
	Influenza A	142	148	105	100	11,282
	Influenza B	112	74	77	64	4,941
	Parainfluenza	31	36	27	33	466
	RSV	32	24	19	15	6,003
	Negative	2,533	2,484	2,494	2,336	97,853
	Total	2,903	2,830	2,796	2,618	122,251

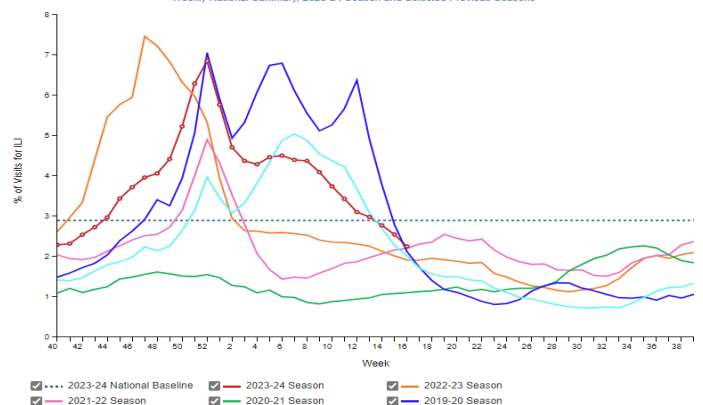
Of the 2,618 specimens tested during Week 15, 10.8% (n=282) were positive for any type of respiratory illness. Influenza A accounted for 35.5% (n=100) of the positive results, influenza B accounted for 22.7% (n=64), enterovirus accounted for 17.4% (n=49), parainfluenza accounted for 11.7% (n=33), adenovirus accounted for 7.4% (n=21), RSV accounted for 5.5% (n=15). Additionally, the reported number of specimens tested decreased 6.4% from Week 14 to Week 15. Significantly more tests for influenza have been conducted this season compared to past seasons; 120,451 specimens have been tested for influenza A so far this season compared to the average of 85,492 specimens during the same time period in 2018-2023*.

INFLUENZA-LIKE ILLNESS (ILI) ACTIVITY - UNITED STATES

Influenza Positive Tests Reported to CDC by Clinical Laboratories, National Summary, 2023-24 Season, week ending Apr 20, 2024



Percentage of Outpatient Visits for Respiratory Illness Reported by The U.S. Outpatient Influenza-like Illness Surveillance Network (ILINet), Weekly National Summary, 2023-24 Season and Selected Previous Seasons

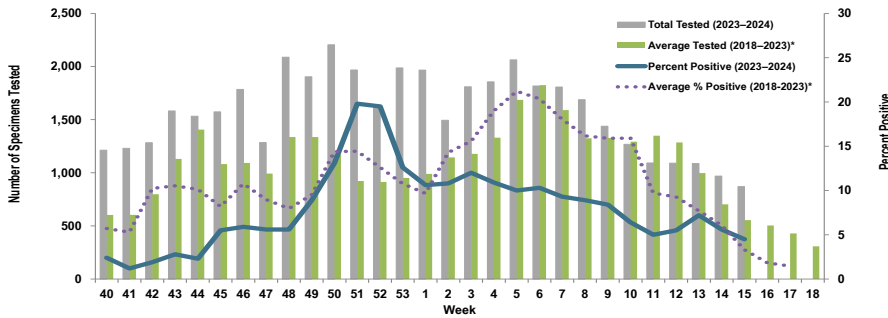


Nationwide in Week 15 (CDC's Week 15), incident ILI activity was 2.3%; this is below the national baseline of 2.9%. Additionally, a total of 56,206 specimens were tested for influenza by select clinical laboratories and submitted to the CDC; 2,720 (4.8%) were positive. Influenza A accounted for 56.3% (n=1,532) of the total positive specimens.

Locations providing Week 15 laboratory data as of 25 April 2024: Camp Zama, Carlisle Barracks, Ft. Belvoir, Ft. Bliss, Ft. Campbell, Ft. Cavazos, Ft. Carson, Ft. Drum, Ft. Eisenhower, Ft. Eustis, Ft. Gregg-Adams, Ft. Huachuca, Ft. Irwin, Ft. Jackson, Ft. Johnson, Ft. Knox, Ft. Leavenworth, Ft. Leonard Wood, Ft. Lewis, Ft. Liberty, Ft. Meade, Ft. Moore, Ft. Novosel, Ft. Riley, Ft. Sam Houston, Ft. Sill, Ft. Stewart, Ft. Wainwright, Korea, Landstuhl Regional Medical Center, Redstone Arsenal, Tripler Army Medical Center, the U.S. Military Academy at West Point, and Walter Reed National Military Medical Center.

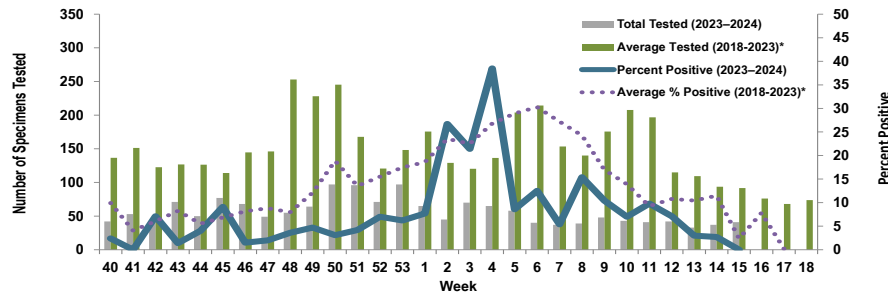
Proportion of Influenza A Positive Specimens by Week and Medical Readiness Command, 2023–2024 as Compared to 2018–2023*

Medical Readiness Command - East



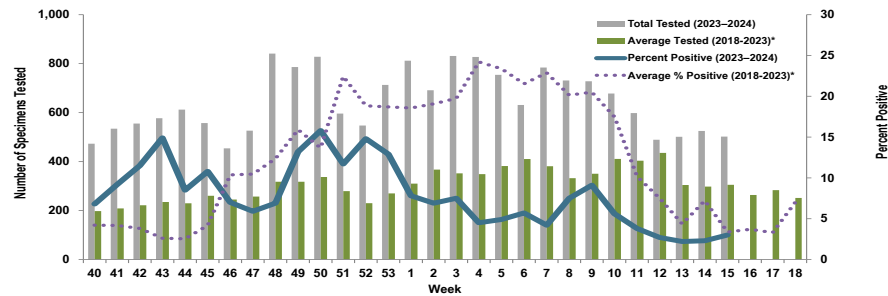
Week 15			
Age Group	AD	Non-AD	Season Total
< 18	0	10	1,311
18–29	11	4	934
30–39	3	2	621
40–49	2	2	403
50–59	0	3	309
60+	0	2	356
Total	16	23	3,934

Medical Readiness Command - Europe (Landstuhl Regional Medical Center)



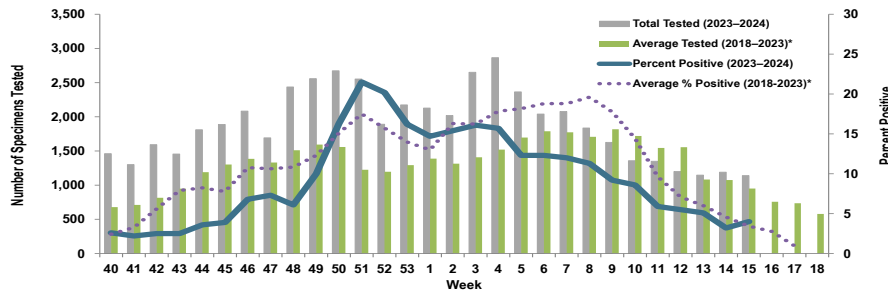
Week 15			
Age Group	AD	Non-AD	Season Total
< 18	0	0	47
18–29	0	0	24
30–39	0	0	25
40–49	0	0	17
50–59	0	0	11
60+	0	0	7
Total	0	0	131

Medical Readiness Command - Pacific



Week 15			
Age Group	AD	Non-AD	Season Total
< 18	0	5	389
18–29	0	3	532
30–39	2	1	273
40–49	1	0	109
50–59	0	1	66
60+	0	2	121
Total	3	12	1,490

Medical Readiness Command - West



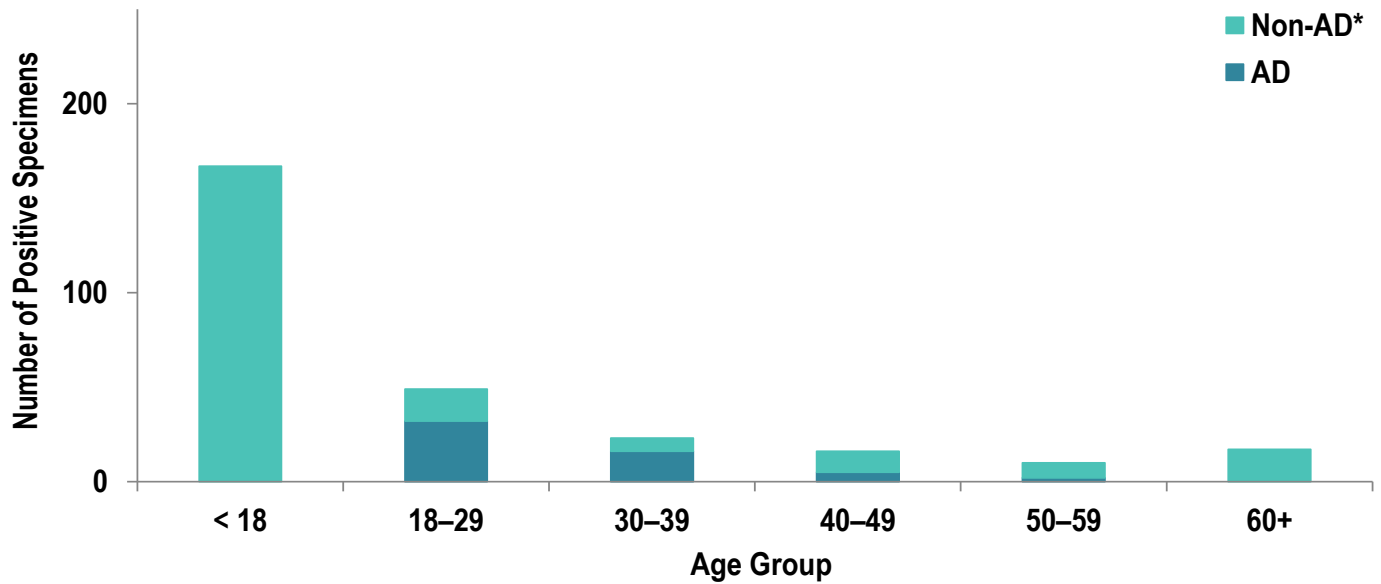
Week 15			
Age Group	AD	Non-AD	Season Total
< 18	0	25	2,002
18–29	9	2	1,473
30–39	1	1	906
40–49	0	3	515
50–59	2	0	381
60+	0	3	445
Total	12	34	5,722

*2018–2019, 2019–2020, and 2022–2023 influenza seasons. Data from the 2020–2021 and 2021–2022 influenza seasons are not included in comparison calculations due to the unusually low incidence of influenza.

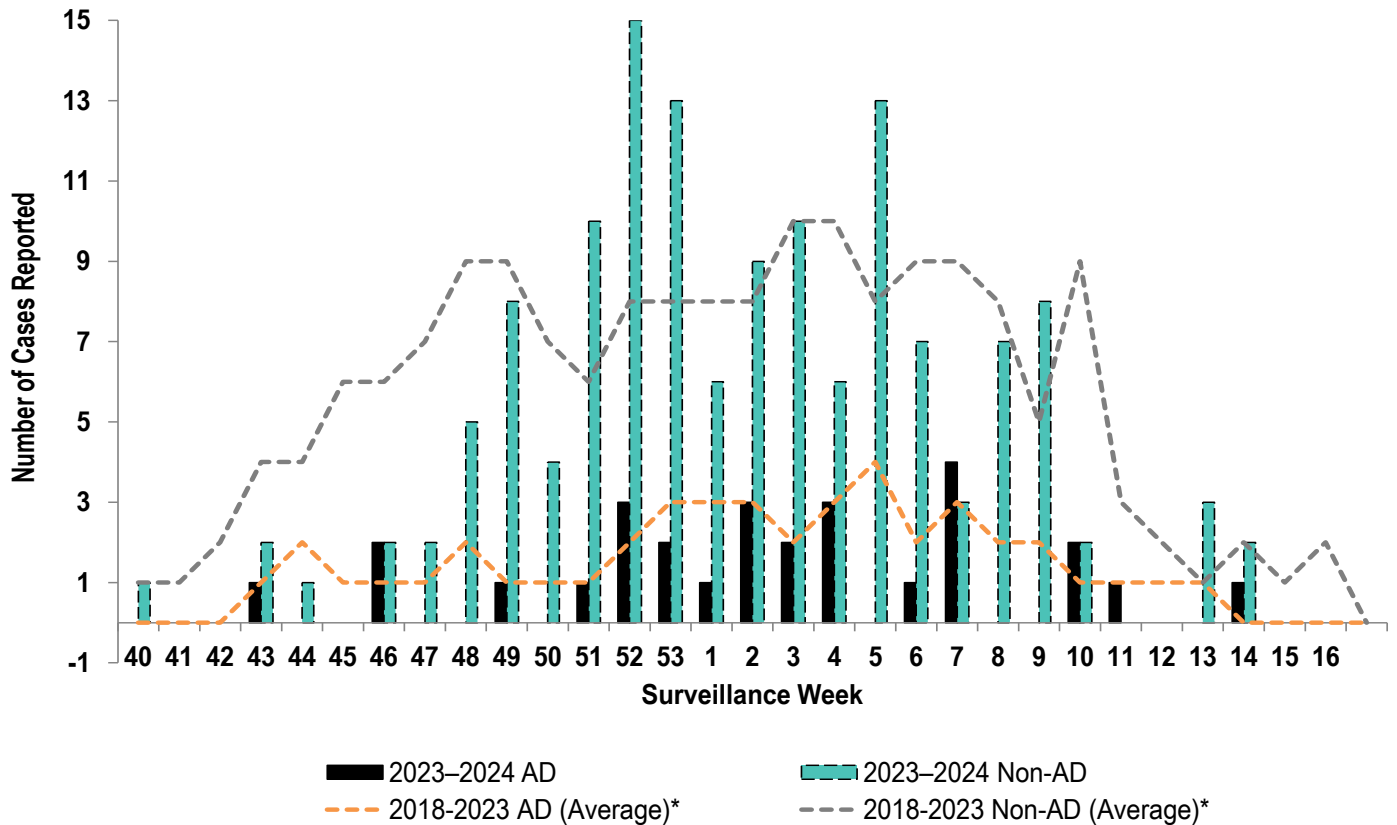
Number of Positive Influenza A Specimens by Region and Duty Status

Region	Week 12		Week 13		Week 14		Week 15	
	AD	Non-AD	AD	Non-AD	AD	Non-AD	AD	Non-AD
MRC-East	20	35	20	40	44	34	32	22
MRC-Europe	1	3	0	3	0	1	0	1
MRC-Pacific	7	16	6	7	6	5	4	8
MRC-West	32	48	20	46	16	42	14	24

Positive Respiratory Specimen Results from Army MTFs by Age Group and Beneficiary Status, Week 15

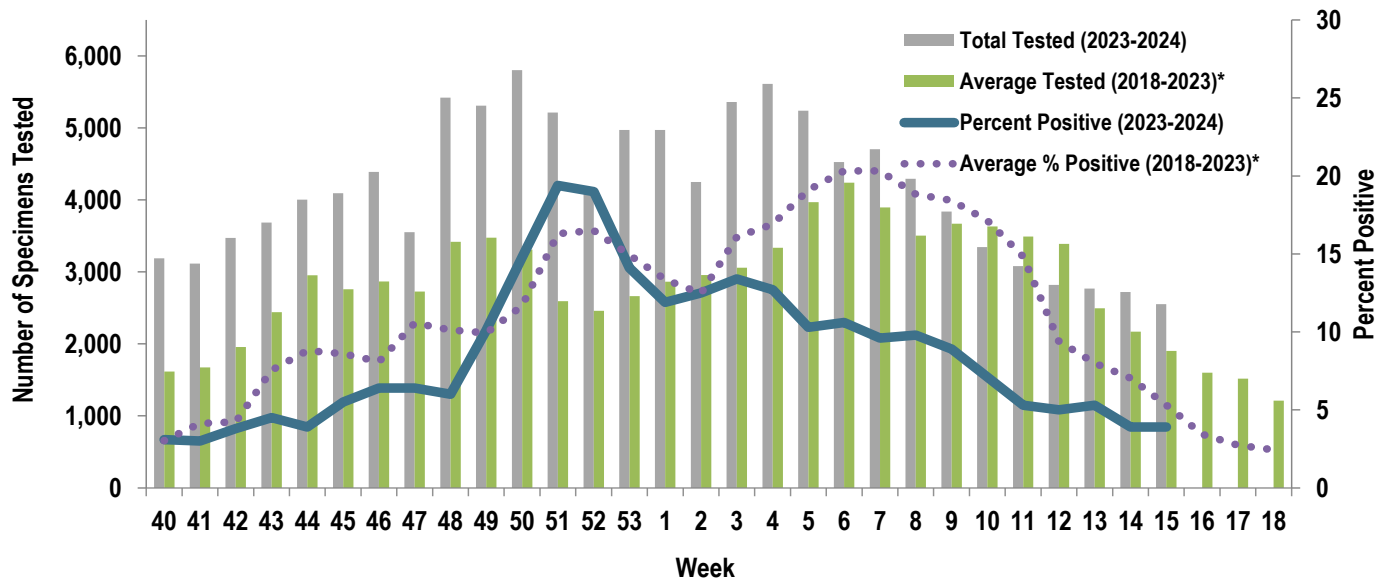


Army Influenza-Associated Hospitalizations Reported in DRSi by Onset Week



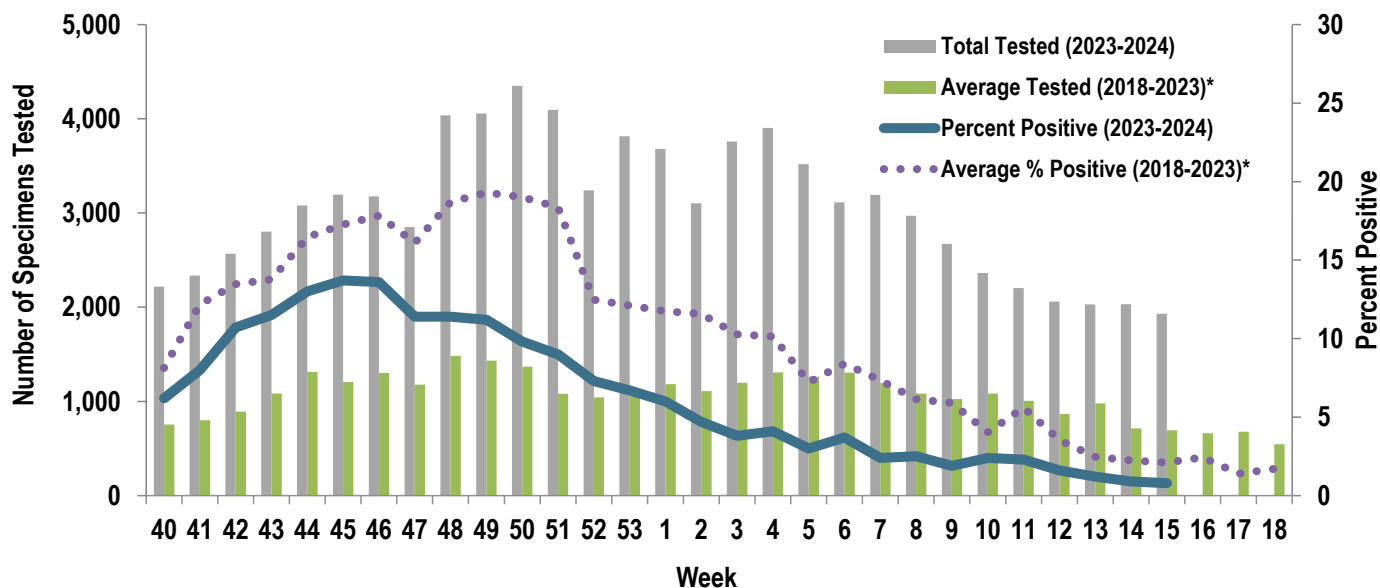
*2018-2019, 2019-2020, and 2022-2023 influenza seasons. Data from the 2020-2021 and 2021-2022 influenza seasons are not included in comparison calculations due to the unusually low incidence of influenza.

Proportion of Positive Influenza A Specimens for U.S. Army, 2023-2024



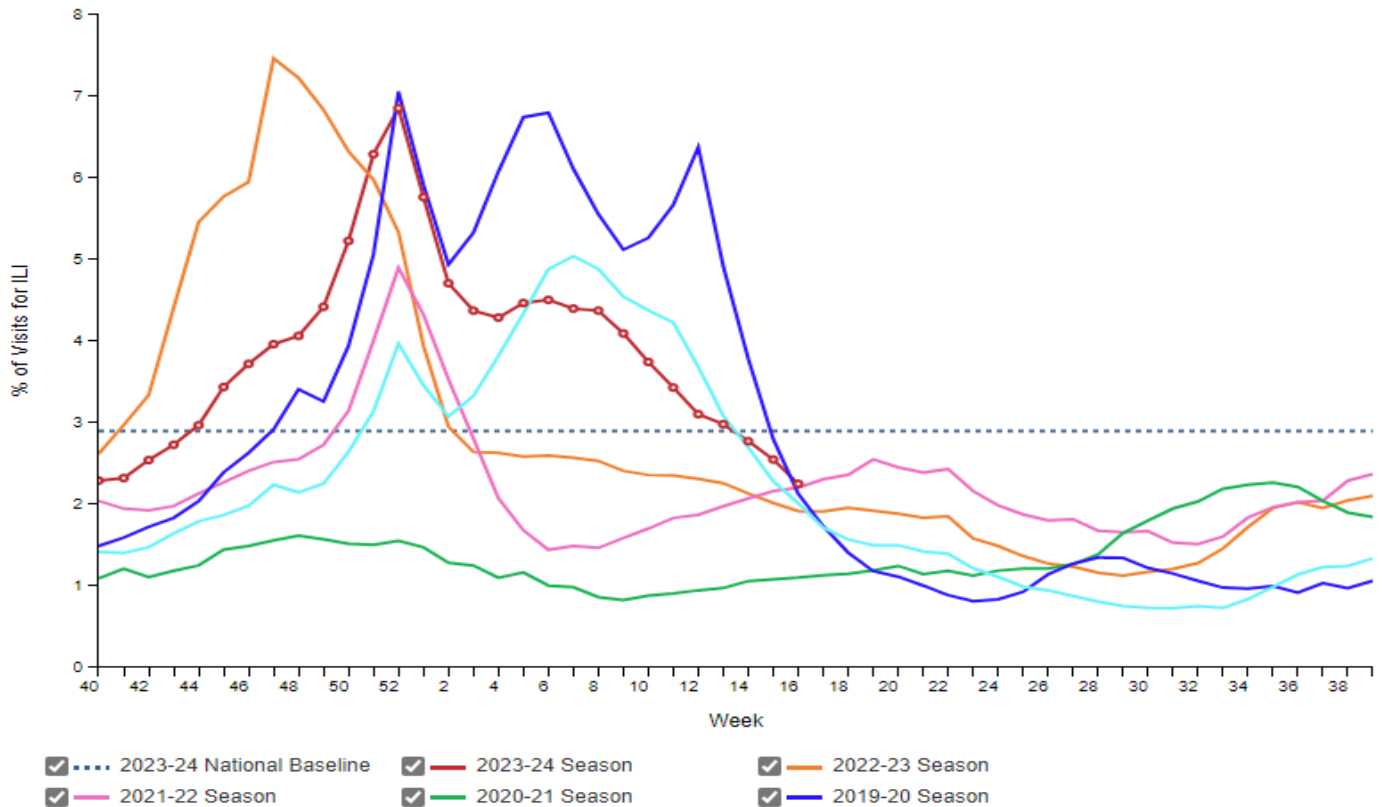
*2018–2019, 2019–2020, and 2022–2023 influenza seasons. Data from the 2020–2021 and 2021–2022 influenza seasons are not included in comparison calculations due to the unusually low incidence of influenza.

Proportion of Positive RSV Specimens for U.S. Army, 2023-2024



*2018–2019, 2019–2020, and 2022–2023 influenza seasons. Data from the 2020–2021 and 2021–2022 influenza seasons are not included in comparison calculations due to the unusually low incidence of influenza.

Percentage of Outpatient Visits for Respiratory Illness Reported by
The U.S. Outpatient Influenza-like Illness Surveillance Network (ILINet),
Weekly National Summary, 2023-24 Season and Selected Previous Seasons



Influenza Positive Tests Reported to CDC by Clinical Laboratories, National Summary, 2023-24 Season, week ending Apr 20, 2024

